

Customer :

customer

Customer part :

customer part

Comment :

Comment

S1=0.03

S2=0.17

Tmax=448

Tp S2=487.0

PI=0.16

HI=42

Sample =8757.3

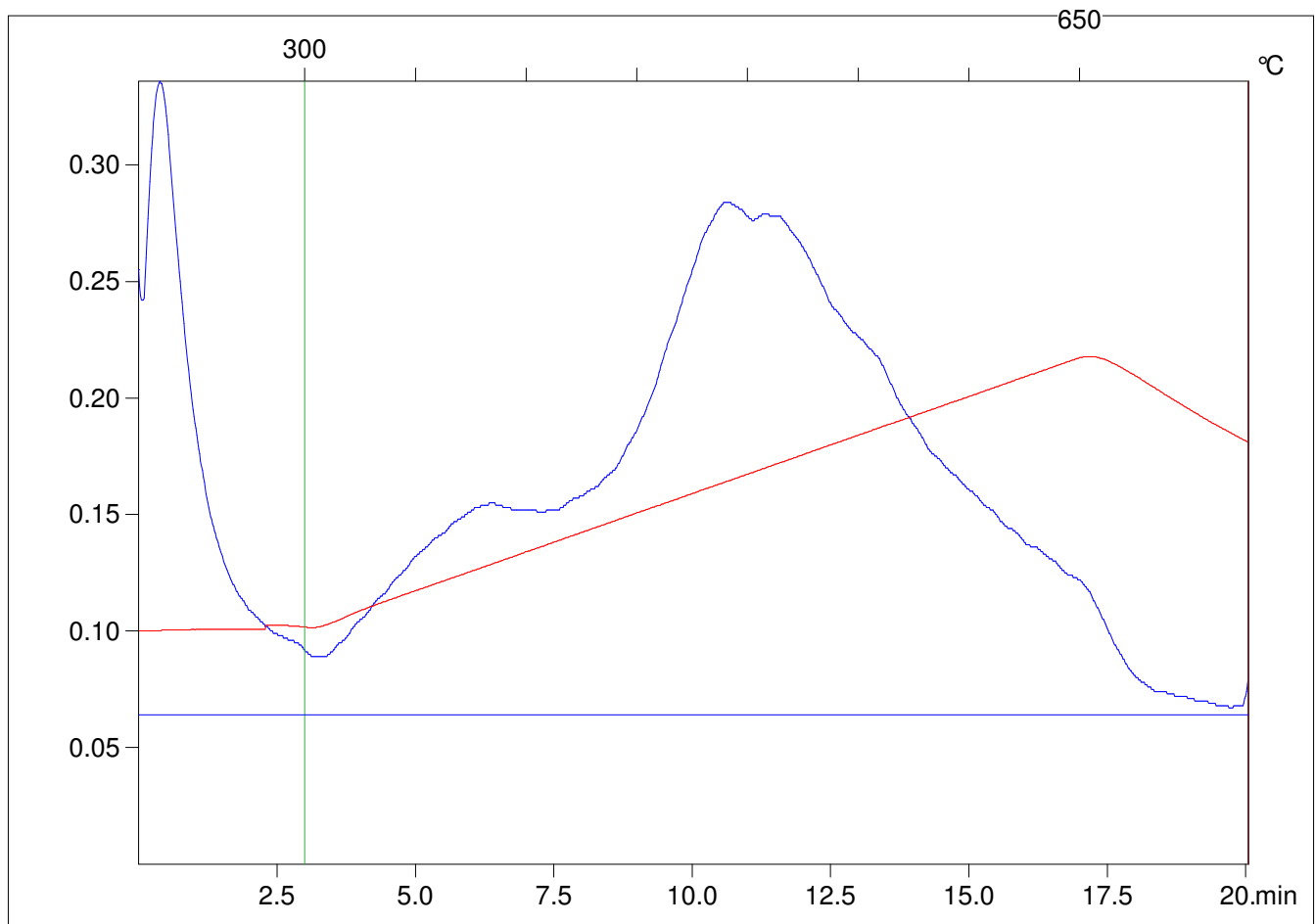
Method =Bulk Rock

Cycle=Basic

KFID(10*9)=1167

Qty =70.0

TOC=0.4



C:\VINC\PK141021\PK003.R00 : FID pyrolysis graphic

State

Pyro Status

Oxi Status